



**Design out the box**



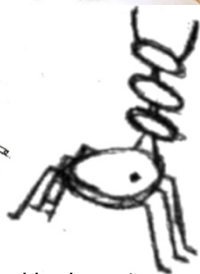
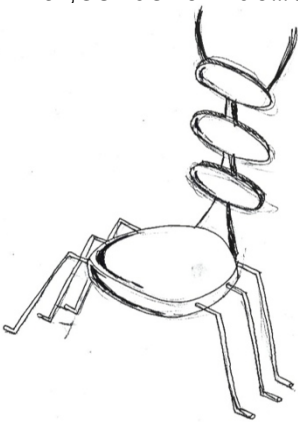
# Animal Inspired

## Context

Nature is a rich source for new ideas in product design and the increase in tourist attractions, such as the Eden Project, has generated new markets. Decorative products such as clothing, jewellery and ceramics are commonly based upon patterns and structures found in nature and many other products, such as kites, toys etc. are based upon natural engineering principles. Increased awareness of the important role our wildlife plays in our ecosystem has meant a sharp rise in the availability of products to encourage and protect local wildlife.

## Design Task

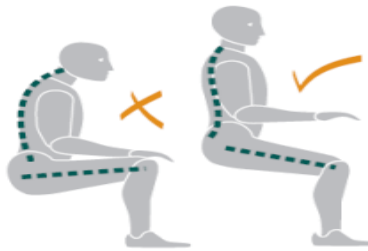
Based on observational drawings from nature, design a new chair and computer desk of products for a specific market to be sold under the brand name 'Wild Things'. The product(s) should only use natural or 100% recyclable materials. Show the inspiration behind your design as the images below do....



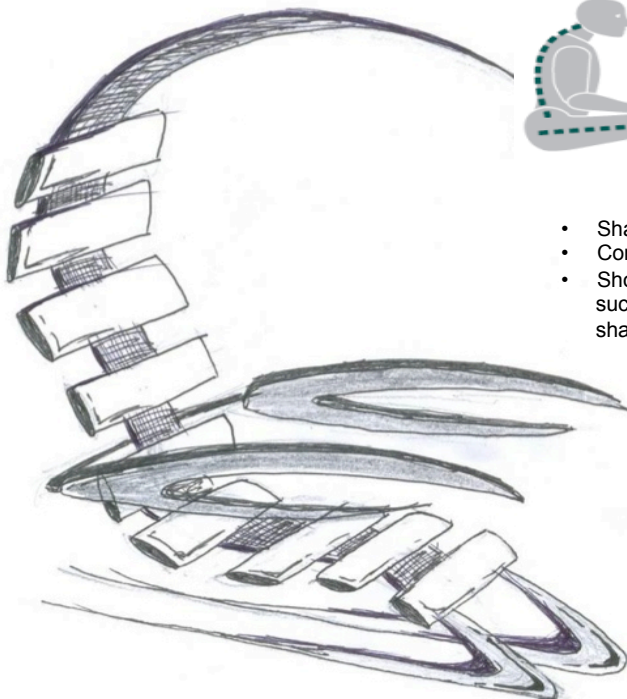
- Separated body parts
- Legs, joints, feet



- Over head tail
- Claws
- Curved body & tail shape



- Shape of the spine
- Correct posture
- Should help design a more successful and comfortable shape for the chair.





# Animal Inspired

Inspiration

Design



Inspiration

Design



# Final Idea

Top View

3D Design



Front View

Side View